

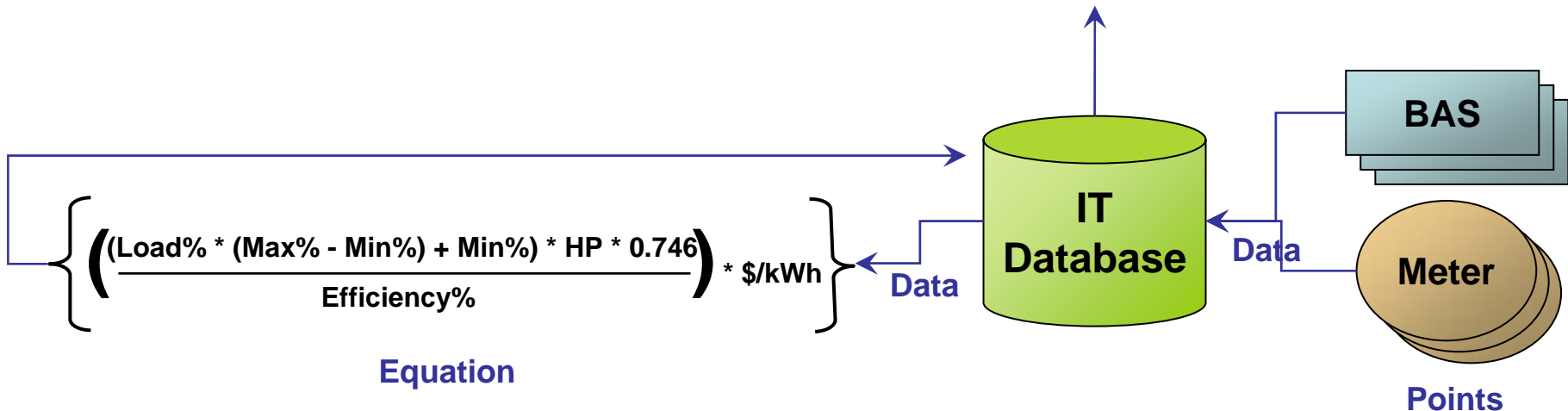
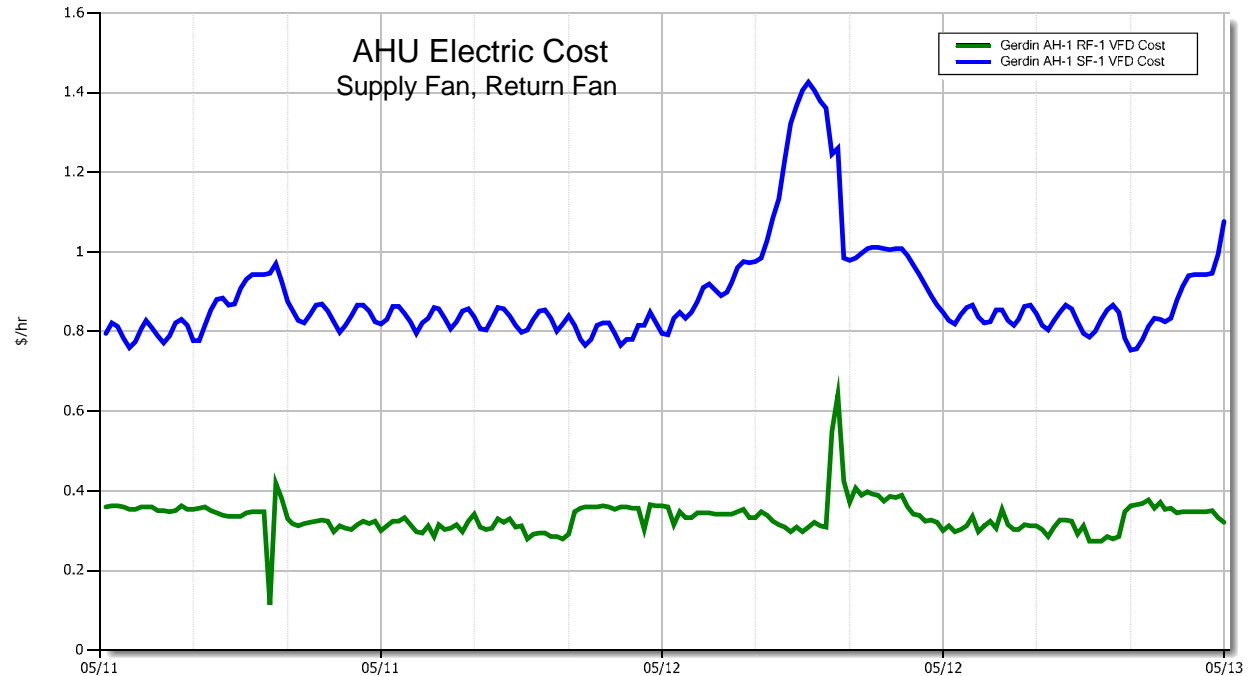
Turning Virtual Points into Tangible Values

Bill Gnerre
Interval Data Systems

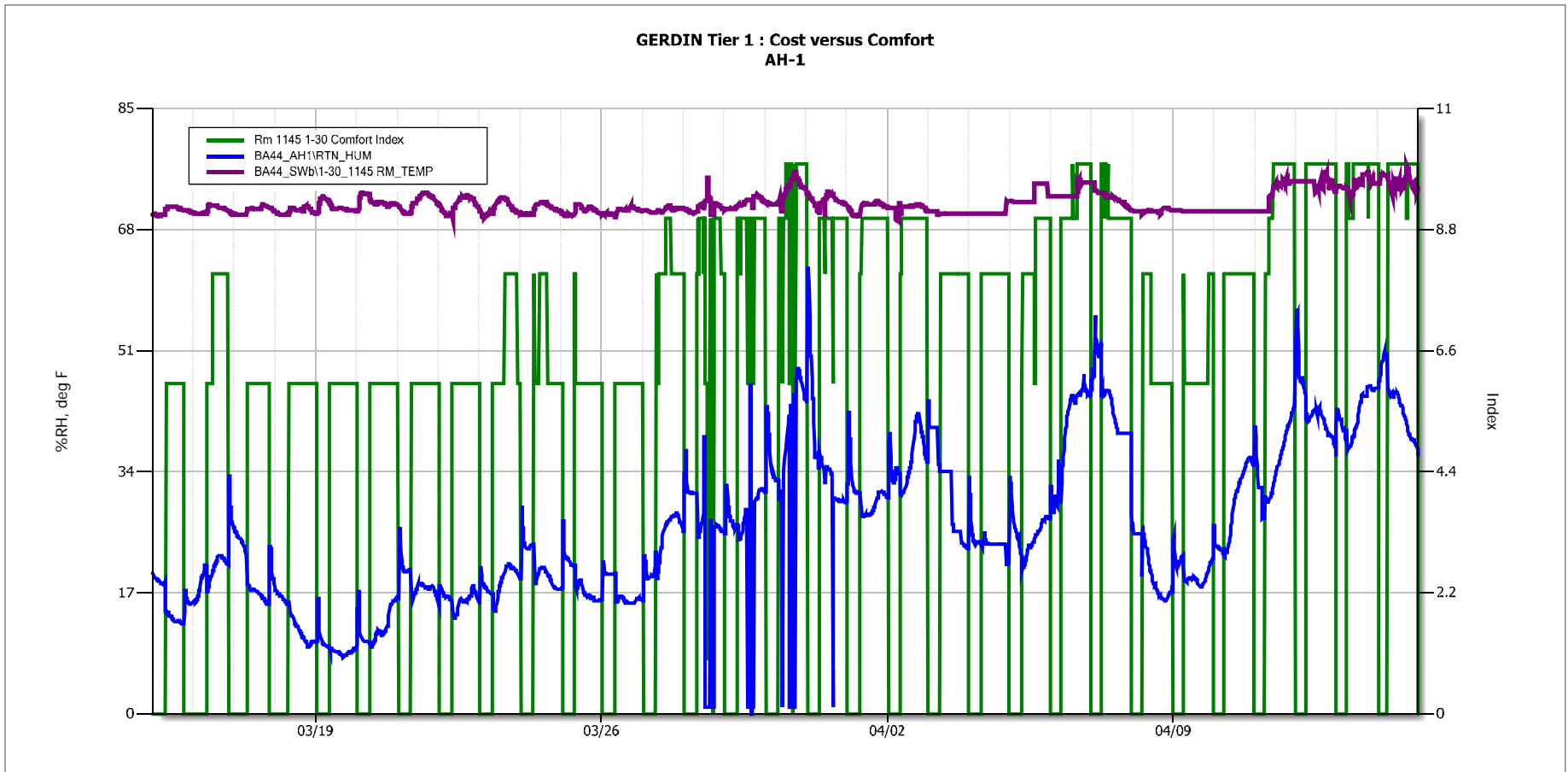


- Virtual Points
 - Traditional points used for new purposes
 - Information points created by IT applications
- Tangible Values
 - Benefits the business of running the facility
 - Quantitative operational/financial benefits
 - Qualitative operational/management benefits

- Collect all operational data
- Build on top of raw operational data
- Make information available to everyone



Historical record of comfort/IAQ delivered



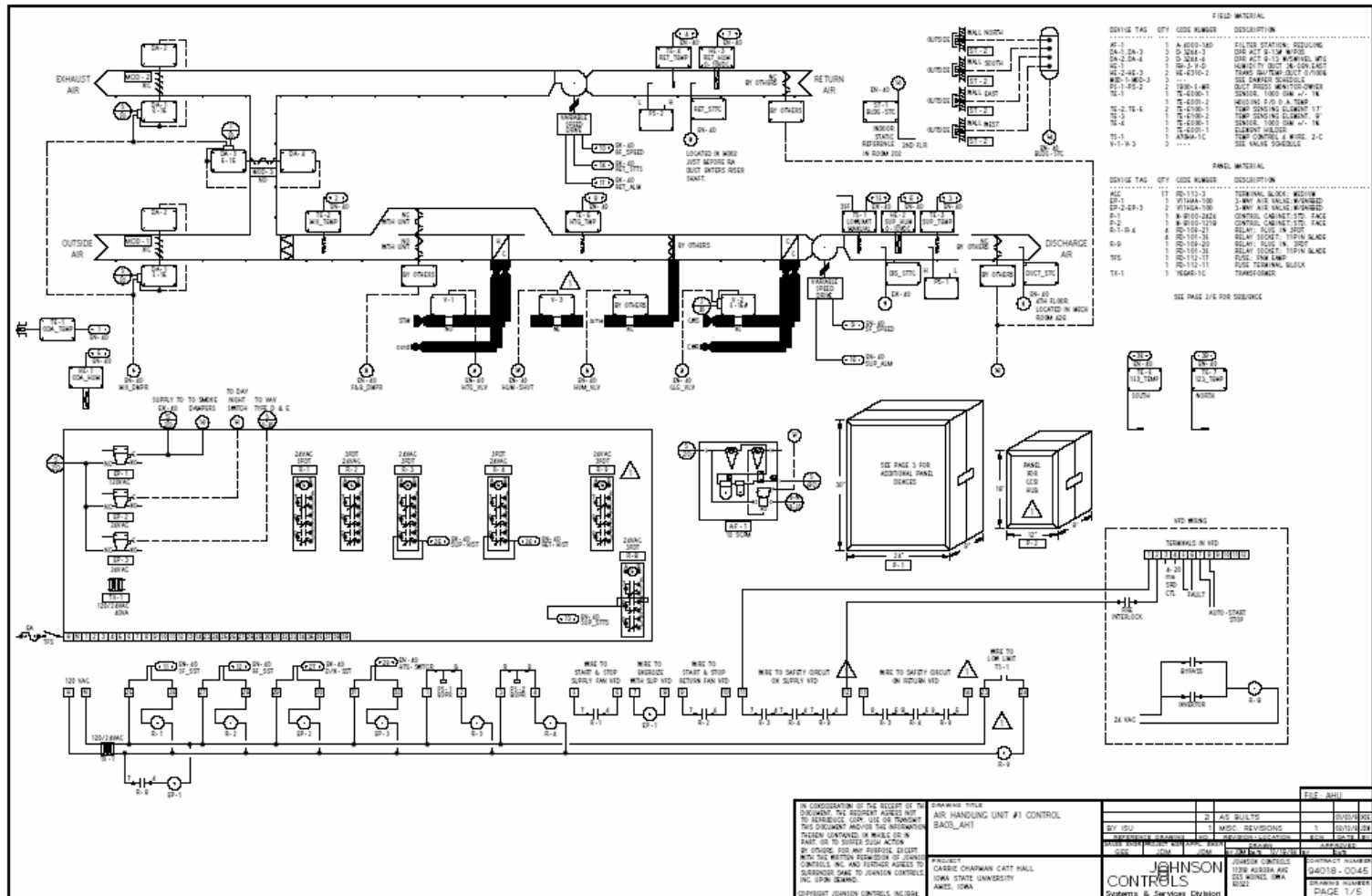
Building report with monthly summary of comfort and cost information

Other metrics:

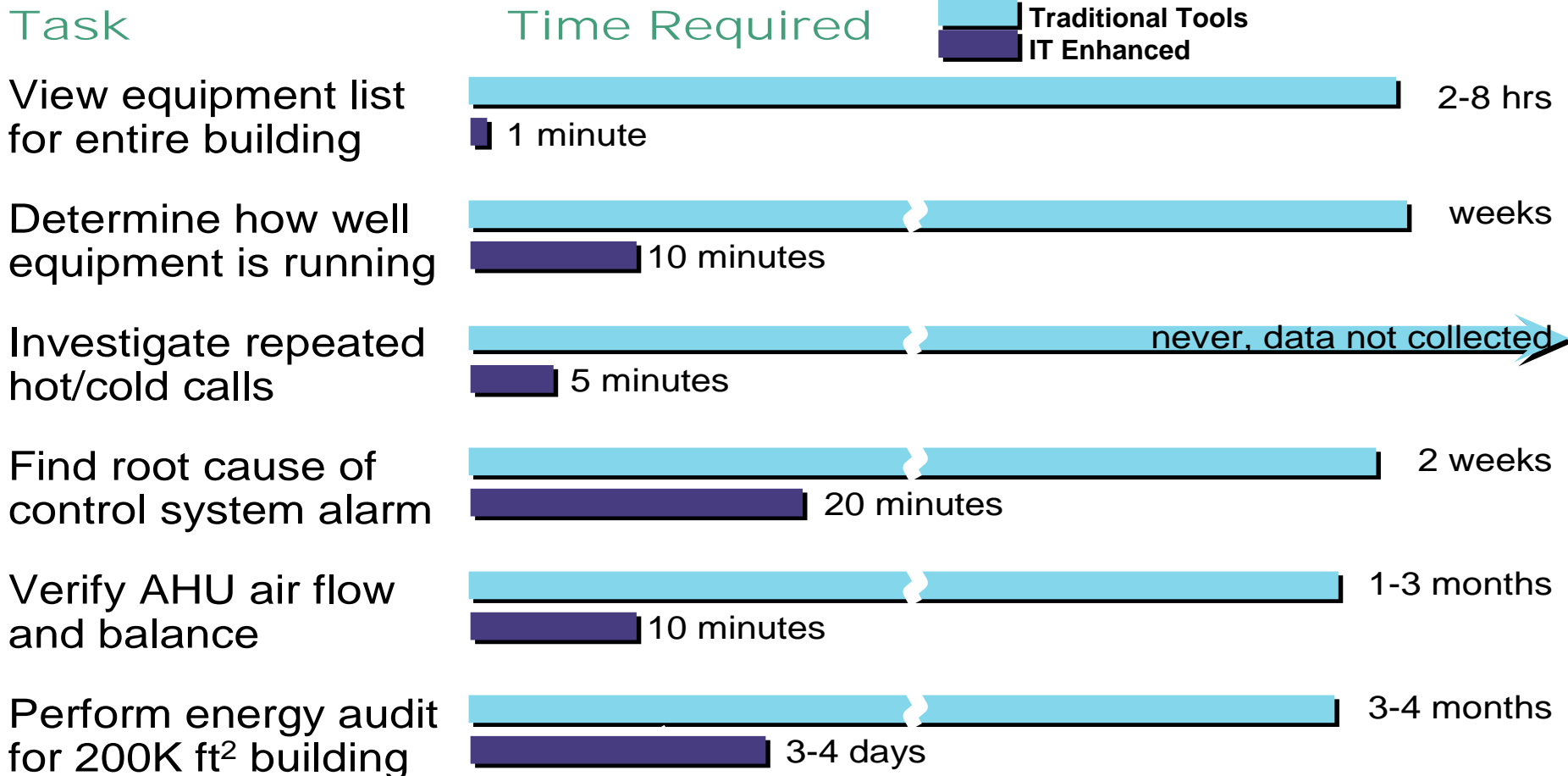
- MBTU/sqft,
- MBTU/room,
- MBTU/AHU
- \$/hour,
- \$/ton,
- \$/ton-hour
- \$/sqft,
- \$/department

Summary Building Cost v Comfort Report						
Gerdin						
From 2/1/2006 to 3/1/2006						
Occupancy Conditions						
	This Month		Last Month		Change	
Comfort Index						
Avg CI	6.0		6.4			-6%
Weather						
Avg Temp	27.8 Deg F		35.0 Deg F			-21%
Building						
Gross Square Feet	73,198 GSF		73,198 GSF			0%
Utility By End Use						
Electric	kWh	Cost	kWh	Cost	kWh	Cost
Air Handling Motors	27,920	\$ 1,895.80	26,222	\$ 1,780.49	6%	6%
Pump Motors	12,000	\$ 814.82	12,000	\$ 814.82	0%	0%
Unspecified	129,512	\$ 8,793.89	99,734	\$ 6,771.94	30%	30%
	<u>169,433</u>	<u>\$ 11,504.51</u>	<u>137,957</u>	<u>\$ 9,367.25</u>	<u>23%</u>	<u>23%</u>
Chilled Water	Ton-Hrs	Cost	Ton-Hrs	Cost	Ton-Hrs	Cost
Supply Air Cooling	946	132	713	\$ 99.42	33%	33%
Unspecified Cooling	(173)	\$ (24.08)	(142)	\$ (19.82)	22%	22%
	<u>774</u>	<u>\$ 107.91</u>	<u>571</u>	<u>\$ 79.60</u>	<u>36%</u>	<u>36%</u>
Steam	Lbs	Cost	Lbs	Cost	Lbs	Cost
Supply Air Heating	132	1,519	100	1,149	0	32%
Space Reheat	94	137	107	1,237	-13%	-89%
	<u>226</u>	<u>\$ 329.25</u>	<u>207</u>	<u>\$ 302.21</u>	<u>9%</u>	<u>9%</u>
Total	MBtu	Cost	MBtu	Cost	MBtu	Cost
Total Cost		\$ 11,941.66		\$ 9,749.05		22%
Total / SqFt	8.03	MBtu/SqFt	6.53	MBtu/SqFt	23%	
Total / HDD	659	MBtu/HDD	635	MBtu/HDD	4%	
Total / CDD		MBtu/CDD		MBtu/CDD		
Total / HDD / SqFt	8.997	Btu/HDD/SqFt	8.675	Btu/HDD/SqFt	4%	
Total / CDD / SqFt		Btu/CDD/SqFt		Btu/CDD/SqFt		

Improved, "right sized" design/construction/Cx



Massive productivity gains

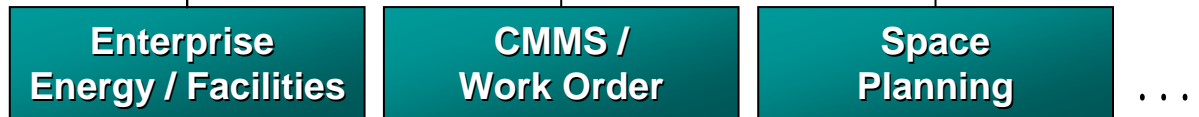




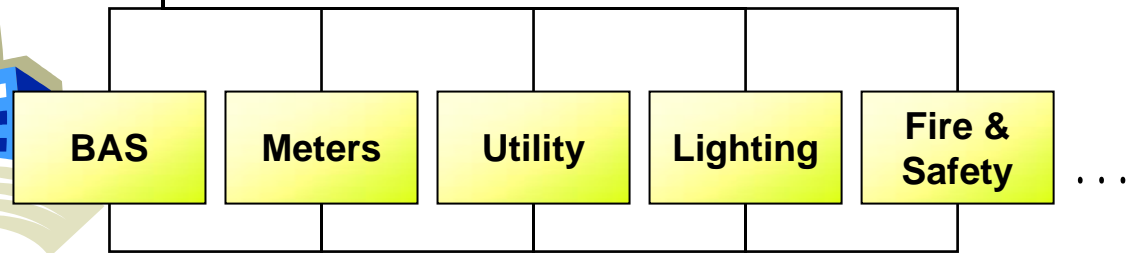
Enterprise Users

(Facilities, Management, Dept. Heads, Finance, Engineers, Technicians, Operators, etc.)

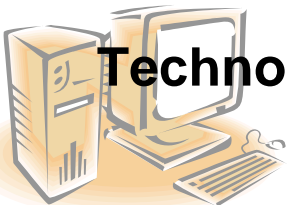
Business Systems



Building Systems (Engineering/Operational)



Technology Standards



Contact Information

Bill Gnerre
bgnerre@intdatsys.com
617-744-1091

Interval Data Systems
www.intdatsys.com

